

# MONTERRA

PART OF PINE RIDGE AT DELRAY BEACH NORTH P.U.D.

BEING A REPLAT OF HIDDEN LAKES PHASE NO. 1, (P.B. 41, PGS. 41-42) AND  
A PORTION OF BLOCK 9, PALM BEACH FARMS COMPANY PLAT NO. 1 (P.B. 2, PGS. 26-28)  
SITUATE IN SECTION 9, TOWNSHIP 46 SOUTH, RANGE 42 EAST  
PALM BEACH COUNTY, FLORIDA

AUGUST, 1990

SHEET 4 OF 5

TO BE MAINTAINED BY THE MONTERRA  
MASTER ASSOCIATION, INC.

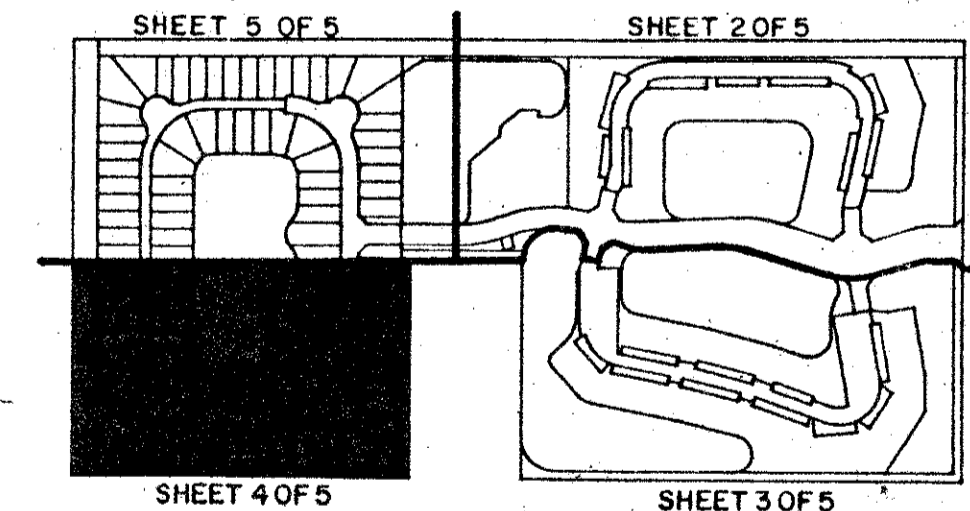
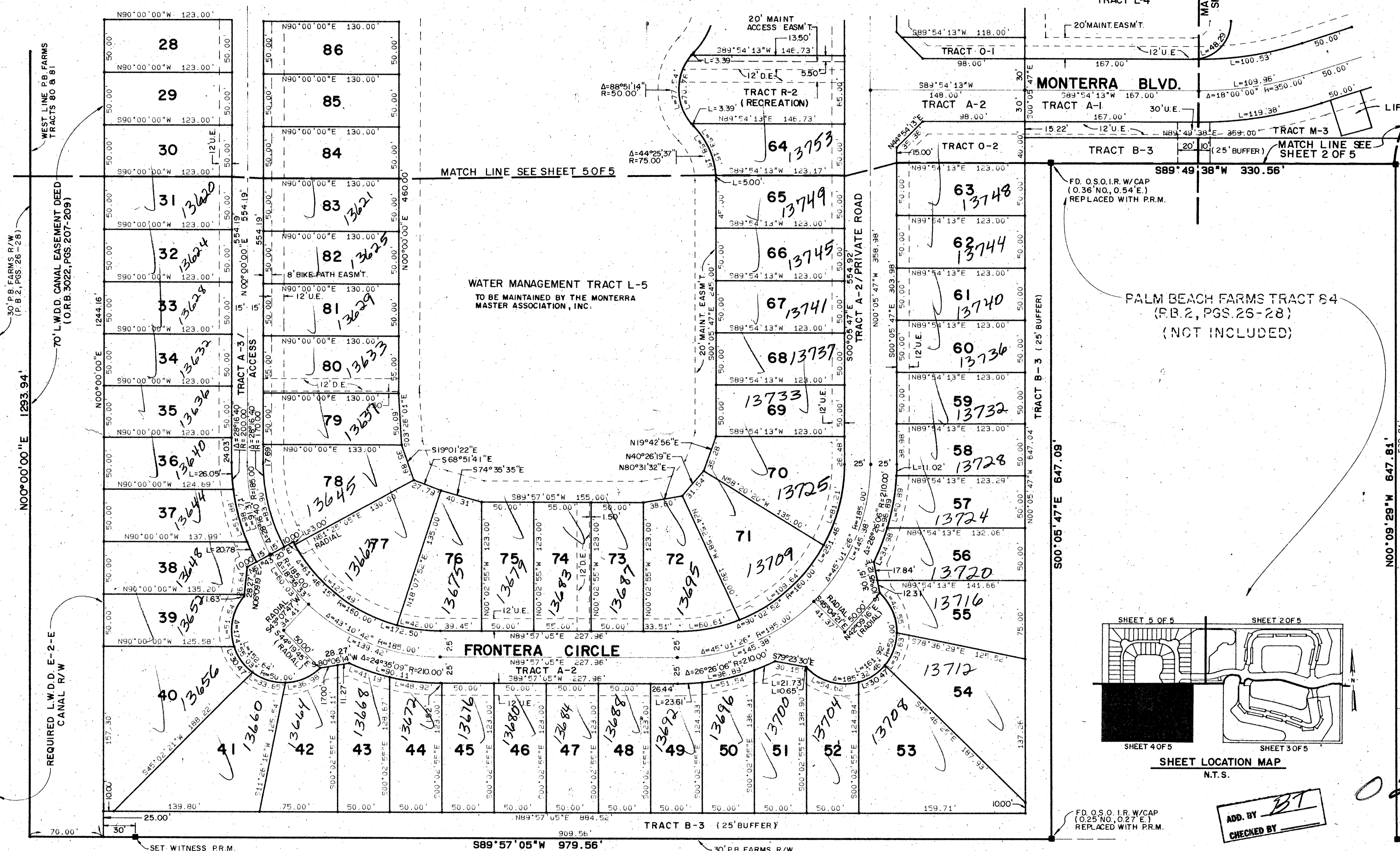
WATER MANAGEMENT  
TRACT L-4

# 193

STATE OF FLORIDA  
COUNTY OF PALM BEACH

THIS PLAT WAS FILED FOR  
RECORD  
THIS DAY OF  
AUGUST, 1990 AND DULY RECORDED  
IN PLAT BOOK ON PAGES  
THROUGH

JOHN B. DUNKLE, CLERK  
BY: \_\_\_\_\_, D.C.



ADD. BY BT  
CHECKED BY \_\_\_\_\_

0253-001  
Pet. 81-215

SUBDIVISION \* MONTERRA  
BOOK 66 PAGE 193  
FLOOD ZONE B FLOOD MAP \* 200A  
QUAD # 51 ZONING RS  
SH 81-215 ZIP 33446  
SITING PINE RIDGE @ DELRAY BCH

TAZ 459

**PETSCHÉ & ASSOCIATES, INC.**  
Professional Engineers • Land Surveyors • Development Consultants  
1760 N. Congress Ave., Suite 203, W. Palm Beach, FL 33409  
(407) 640-3800

**MONTERRA**

DRAWN M.E.H.	DATE OCT 1990	SCALE 1" = 50'	JOB NO. 89-042	SHEET 4	OF 5
DESIGNED	CHECKED R.A.H.				

66/193